

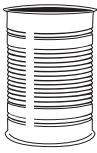


Product Overview

3-Piece Canmaking



G.M. KUHNKE



Products for 3-Piece Canmaking

The SEAMscan XTS Non-Destructive Double Seam Measurement



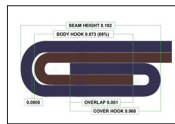
The SEAMscan XTS is a revolutionary, Non-Destructive tool for operator-independent double seam measurement.

No More Double Seam Teardowns

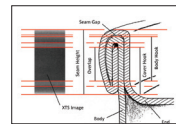
Designed specifically for can-makers and brand-owners, SEAMscan XTS delivers a high-resolution X-ray seam scope in a compact and user-friendly package. The SEAMscan XTS is a semi-automated unit designed to measure the internal parameters of the double seam.

All measurements are non-destructive resulting in no product spoilage due to double seam teardown inspection. Measurements include: Seam Height, Body Hook, Cover Hook, Overlap, Seam Gap, % Tightness, % Primary Sealing Area, Wrinkle Amplitude.

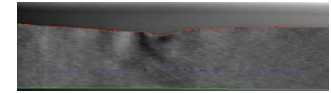
- Faster than conventional cross-sectional methods
- No Product Spoilage
- 360° Measurement
- Safer than conventional cross-sectional methods
- Operator Independent
- World Class R&R
- Semi or Fully Automated
- Complete Tightness Scan



XTS Virtual Seam Image



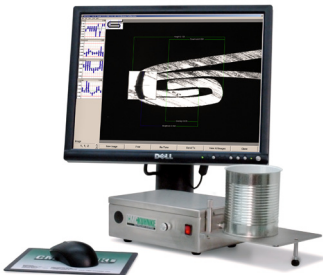
X-ray Seam Image



XTS Wrinkle Image

SEAMview System 5

SVW-1000 High Resolution Seam Measurement



The SEAMview System 5 is an affordable way to make can seam measurement easier, faster, and more accurate.

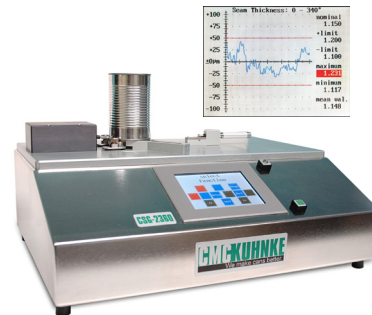
Designed specifically for can-makers and brand-owners, SEAMview delivers a high-resolution can seam scope and powerful automatic double seam inspection software, packaged in a friendly user interface.

The SEAMview System 5 is made up of two essential components:

- VSI-5000 Series USB Video SEAM Imager - Clearly Illuminates & Captures images of seams
- SEAMview Inspection Software - Capture, measure & save seam images in less than a second!

Combination Seam Gauge 360°

CSG-2360 Semi-Automatic Seam Gauge



- Complete Seam Thickness Profiling with graph - extremely useful for locating and measuring problematic compound bumps
- Can is Rotated Automatically, significantly increasing inspection accuracy and reducing inspection time
- 1000 Readings per second in 360° mode

Fully-Automated version available!

Visionary QC™ Software

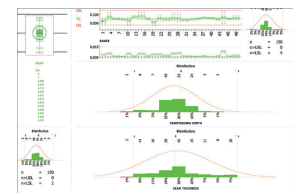
Dynamic Data Collection and Statistical Process Control

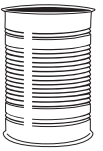


Designed specifically for the canning industry, Visionary QC™ is CMC-KUHNE's most comprehensive data acquisition software to date.

Visionary QC™ provides flexibility for those working at advanced technology levels, yet is simple enough for less experienced technicians.

- Easy Data Entry
- Secure Database
- Intuitive Reports





Bead/Height/Flange Gauge

BHF-2000 Semi-Automatic Combination Measurement Gauge



This operator-independent measurement system automatically and accurately measures Bead Depth, Can Height and Flange Width, with the option of Roll Bead Measurement and Bead Profile.

The ideal "End of Line" gauge.

The Bead/Height/Flange Gauge combines the functions of three essential gauges for objective, accurate, and repeatable measurements. Its solid, fixture-based design, V-block positioner and

automatic operation make it easy for operators to feel confident in their readings, regardless of their quality assurance experience.

Product Highlights:

- Can is rotated automatically, saving time and providing repeatable, accurate results
- Reduces clutter by combining essential measurement systems into one, robust unit
- Automatic transfer of data
- Fully-Automatic version available

Manual Gauges for Can Measurement

Objective and Repeatable
Flange Width Measurement
FWG-4000 Series



Precise Measurement of Can
Plate Thickness
PTG-3000MH



Manual Gauge for Measurement
of Internal Can Diameter
PDG-1000



High-Precision Body Blank Gauge
with Linear Compensation
BBG-2-600-HDH



Microscope for Digital Image Capture
of Metal Packaging Components
DVM-1



Panel Implosion/Axial Load Tester

PAX-1153 Axial Load and Panel Strength in one compact unit!



Panel Implosion Testing:

The Panel Test is started with the touch of a button. The pressurized chamber is held securely closed while pressure is increased within using CMC-KUHNKE's Quick-Fill™ Technology. The maximum pressure at which the container panel fails is displayed on the touch-screen.

Axial Load Testing:

The easy to use Axial Load Tester measures the maximum axial load capacity of food cans of multiple heights and diameters without the need for inserts or adapters. To perform this

test, one can is placed on a table and slowly raised against the upper pressure plate. Once the maximum force has been reached, the axial load value is displayed on the touch-screen.

Product Highlights:

- Automatic testing process - eliminates operator error
- Results may be sent to Visionary QC or other data acquisition software
- Multiple Safety Features - The control system will not start the panel test until the door latch is securely closed, and the design prevents the door from being opened while the can tester is under pressure
- Rugged construction designed to withstand rigorous environments
- Windows on the sides of the pressure chamber allow the operator to see the implosion process.

Fully-Automatic Enamel Rater

MARS-ENR Fully-Automatic In-Line Enamel Rater



- World's fastest automated enamel rater at 4cpm
- Welded stainless steel frame designed for maximum corrosion resistance
- High resolution measurements displayed in 0.001mA
- No changeover from 8oz to 16oz
- Customized measurement events - duration, range, contact control, current limits and fill level
- Installed In-line, or stand-alone
- Test data automatically transferred via RS232, or Ethernet

Digital Enamel Rater for Cans and Ends and Accessories
ENR-2000



Side Seam Tester



Can Tester

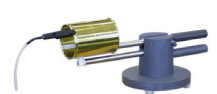


End Tester

Digital Film Weight Gauge and Accessories
DFW-3000



EZ-Probe

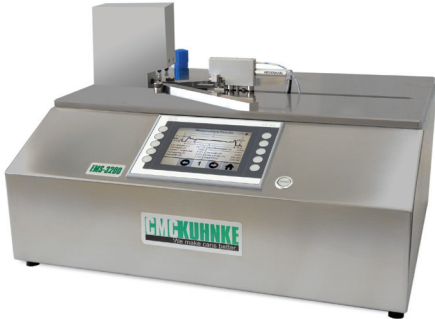


Can Probe



Semi-Automatic End Measurement Station

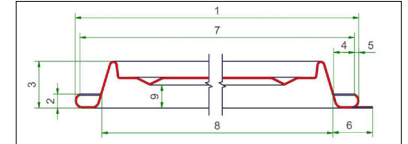
EMS-3200 Semi-Automatic Multiple Diameter End Measurement



The EMS-3200 End Measurement Station provides automatic measurements for every characteristic of the can-end, substantially increasing time savings over manual gauges. Featuring automatic end rotation, the new End Measurement Station completely eliminates operator error, maximizing accuracy.

Saves time with increased accuracy!

At the touch of a button, the EMS-3200 automatically measures Curl Diameter (1), Curl Height (2), Countersink Height (3), Curl Opening (4), Curl Width (5), Curl Length (6), Inside Curl Diameter (7), Chuck Fit (8), and the option of First Bead Height (9) up to 20 times around the Can End.



Product Highlights:

- Provides substantial time savings over manual end inspection gauges
- Increased accuracy with completely operator independent measurement
- Automatic rotation of can end - allows for true calculation of end characteristics
- Automatic data export
- Customizable test types including number of measurements per end and characteristics to be measured
- Pictorial representation of end measurements shown on screen
- Available for large ends up to 230mm in diameter

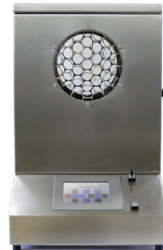
Fully-Automatic End Measurement Gauge
MARS-DMA



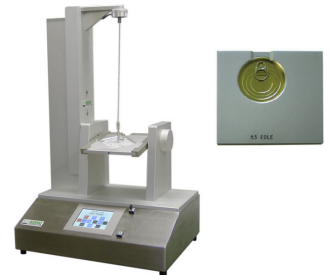
Pressure of No Return/Vacuum Gauge
PNR-1153BV



Easy Open End Burst Tester
EBT-1000



Pop and Tear Tester for Easy Open Ends
PAT-Series



CMC-KUHNKE

Worldwide

CMC-KUHNKE, Inc

1060 Broadway
Albany, NY 12204
UNITED STATES

Tel: +1 518-694-3310
Fax: +1 518-694-3311
sales@cmc-kuhnke.com
www.CMC-KUHNKE.com

CMC-KUHNKE GmbH

Colditzstr. 34-36
D-12099 Berlin
GERMANY

Tel: +49-30-230066-0
Fax: +49-30-230066-66
sales@cmc-kuhnke.de
www.CMC-KUHNKE.de

CMC-KUHNKE Americas

Calzada Ermita Iztapalapa #334 – 1er piso
Col. Emperador Cacama
Iztapalapa, C.P.09080 México D.F.
MEXICO

Tel: +52-55-12091046
Fax: +52-55-12091047
sales@cmc-kuhnke.com.mx
www.CMC-KUHNKE.com.mx

CMC-KUHNKE Precision Gauges Co., Ltd.

Shenzhou Road 885
Science City, Luogang Dist.
Guangzhou 510663
CHINA

Tel: +86 20 39292287
Fax: +86 20 39292287
infochina@cmc-kuhnke.com
www.CMC-KUHNKE.cn

CMC-KUHNKE, Inc. Southeast Office

18503 Pines Blvd, Ste 302
Pembroke Pines Fl 33029
UNITED STATES

Tel: 954-806-2378
Fax: 518-694-3311
sales@cmc-kuhnke.com
www.CMC-KUHNKE.com

CMC-KUHNKE, Inc. Midwest Office

900 Parkview Drive
Stoughton, WI 53589
UNITED STATES

Tel: 608-205-2612
Fax: 518-694-3311
sales@cmc-kuhnke.com
www.CMC-KUHNKE.com

CMC-KUHNKE, Inc. West Coast Office

16537 China Berry Ct.
Chino Hills, CA 91709
UNITED STATES

Tel: 714-833-8381
Fax: 518-694-3311
sales@cmc-kuhnke.com
www.CMC-KUHNKE.com

CMC-KUHNKE Asia Co., Ltd.

Rm 2205 22/F Causeway Bay Plaza 2
463-483 Lockhart Road
Causeway Bay, Hong Kong
CHINA

Tel: +86 20 39292287
Fax: +86 20 39292287
infochina@cmc-kuhnke.com
www.CMC-KUHNKE.cn