



Product Overview

Double Seam Inspection for Beverage Cans



GMI-KUHNKE



XTS Virtual Seam Teardown Technology

Non-Destructive Double Seam Inspection

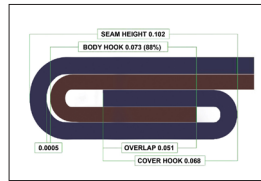
- Faster than conventional cross-sectional methods
- No Product Spoilage
- 360° Measurement
- Safer than conventional cross-sectional methods
- Operator Independent
- World Class R&R
- Semi or Fully Automated
- Complete Tightness Scan

The XTS is a revolutionary, Non-Destructive tool for operator-independent double seam measurement.

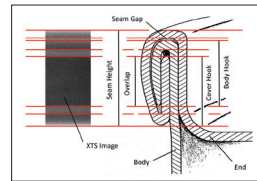
No More Double Seam Teardowns

Designed specifically for can-makers and brand-owners, SEAMscan XTS delivers a high-resolution X-ray seam scope in a compact and user-friendly package.

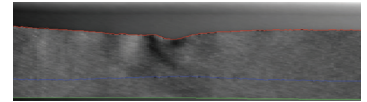
XTS Virtual Seam Image



X-ray Seam Image



XTS Wrinkle Image



The SEAMscan XTS*

Non-Destructive Double Seam Measurement



The SEAMscan XTS is a semi-automated gauge designed to measure the internal parameters of the double seam.

All measurements are non-destructive resulting in no product spoilage due to double seam teardown.

Measurements include: Seam Height, Body Hook, Cover Hook, Overlap, Seam Gap, % Tightness, % Primary Sealing Area, Wrinkle Amplitude.

MARS-XTS*

Fully-Automated Non-Destructive Double Seam Measurement



The fully-automated MARS-XTS combines the internal X-ray seam measurements of the SEAMscan XTS with the CSG-Series Seam Gauge for external measurements. The MARS-XTS provides faster inspection results, and reduced labor costs.

A sophisticated handling system moves a complete range of filled food or beverage cans through the measurement stations.

Visionary QC™ Software

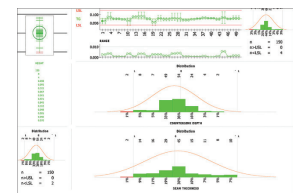
Dynamic Data Collection and Statistical Process Control



Designed specifically for the canning industry, Visionary QC™ is CMC-KUHNKE's most comprehensive data acquisition software to date.

Visionary QC™ provides flexibility for those working at advanced technology levels, yet is simple enough for less experienced technicians.

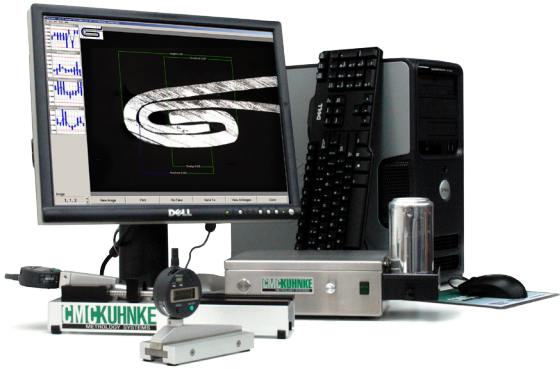
- Easy Data Entry
- Secure Database
- Intuitive Reports





The SEAMscan SPC System

Affordable High Resolution Double Seam Inspection



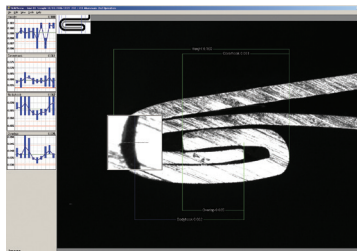
The SEAMscan SPC System is an affordable high-resolution tool for double seam inspection and measurement.

SEAMscan SPC gives you a precision optical seam scanner and a powerful SPC database, packaged in a friendly user interface for both novice and expert computer users.

The SEAMscan SPC System is made up of three products essential for proper double seam maintenance and is often bundled with a technical support plan:

- **VSI-5211 Video SEAM Imager**
High-resolution digital seam scope.
- **Visionary SPC Software**
A version of our powerful Visionary QC™ Database Software for can inspection and statistical process control.
- **SEAMview Inspection Software**
Software to automatically measure, compare and evaluate double seam images.

The fastest, easiest, most reliable and affordable computerized Double Seam inspection software available – SEAMview Inspection Software continues to set new industry standards.



**Measure, compare and evaluate
Double Seams in less than one second!**

Double seam images are automatically measured in high-resolution; out-of-spec readings are highlighted directly on the double seam; SPC graphs are displayed with the double seam.

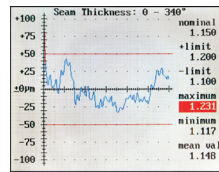
Combination Seam Gauge 360°

CSG-2360 Semi-Automatic Seam Gauge with Complete 360° Seam Thickness Profile



The semi-automated CSG-2360 adds the capability of a complete 360 degree profile of the critical seam thickness measurement to our popular CSG series of gauging.

Running in standard mode, the CSG-2360 provides automated seam thickness and countersink depth measurements at multiple locations around the can.



- Complete Seam Thickness Profiling with graph - extremely useful for locating and measuring problematic compound bumps
- Can is Rotated Automatically, significantly increasing inspection accuracy and reducing inspection time
- 1000 Readings per second in 360° mode
- Fully-Automated version available



Beverage Seam Imager
VSI-5211



Beverage Seam Saw
AGS-2000



Seam Thickness Gauge
STG-4000



Countersink Depth Gauge
CDG-3000



Seam Stripper
STR-1000

What Sets CMC-KUHNKE Apart?

Extensive Product Line

CMC-KUHNKE offers the widest product range in the industry. This is achieved in part through varying degrees of automation: for every attribute to be measured, CMC-KUHNKE has a manual, semi-automated, and fully-automated solution. In addition, CMC-KUHNKE offers gauging for all test objects in the metal packaging arena – food, beverage, aerosol cans, as well as end and double seam inspection. CMC-KUHNKE also has a comprehensive software suite – Visionary QC - for collecting, maintaining, and reporting measurement data. Whatever the size, budget or needs of a customer, CMC-KUHNKE can tailor a package for them.

Innovation & Automation

CMC-KUHNKE is committed to innovation and its product line is constantly expanding. For example, CMC-KUHNKE produced the world's first computerized double seam inspection system in the 1980s and in 2005 sold the first completely automated version of this system. CMC-KUHNKE brings dozens of new and improved products to market each year, often designed in conjunction with can makers who recognize CMC-KUHNKE as the engineering leader in the field. CMC-KUHNKE's MARS product line is an extensive line of fully automated gauges for can, end, and double seam measurement as well as enamel rating.

Measurement Experience

CMC-KUHNKE has been focused on measurement solutions exclusively within the packaging industry for over 40 years, often introducing ground breaking new products years before they have been offered elsewhere.

Highest Quality

CMC-KUHNKE has long had the reputation for providing the highest quality and accuracy of gauging. CMC-KUHNKE is committed to quality and guarantees it with a Gauge Quality Guarantee: In conjunction with the customer, a standard for the gauge is agreed upon and confirmed with extensive R&R testing prior to shipment.

Global Support

To support its ever-growing international customer base CMC-KUHNKE has the widest network of agents in the industry. In addition to head offices in Berlin and New York, CMC-KUHNKE has opened regional support offices in Mexico City, Hong Kong, Guangzhou and 3 more in the United States. The opening of these regional offices over the last few years demonstrates both CMC-KUHNKE's growth and its commitment to localized technical support.

CMC-KUHNKE

Worldwide

CMC-KUHNKE, Inc

1060 Broadway
Albany, NY 12204
UNITED STATES

Tel: +1 518-694-3310
Fax: +1 518-694-3311
sales@cmc-kuhnke.com
www.CMC-KUHNKE.com

CMC-KUHNKE GmbH

Colditzstr. 34-36
D-12099 Berlin
GERMANY

Tel: +49-30-230066-0
Fax: +49-30-230066-66
sales@cmc-kuhnke.de
www.CMC-KUHNKE.de

CMC-KUHNKE Americas

Calzada Ermita Iztapalapa #334 – 1er piso
Col. Emperador Cacama
Iztapalapa, C.P.09080 México D.F.
MEXICO

Tel: +52-55-12091046
Fax: +52-55-12091047
sales@cmc-kuhnke.com.mx
www.CMC-KUHNKE.com.mx

CMC-KUHNKE Precision Gauges Co., Ltd.

Shenzhou Road 885
Science City, Luogang Dist.
Guangzhou 510663
CHINA

Tel: +86 20 39292287
Fax: +86 20 39292287
infochina@cmc-kuhnke.com
www.CMC-KUHNKE.cn

CMC-KUHNKE, Inc. Southeast Office

18503 Pines Blvd, Ste 302
Pembroke Pines Fl 33029
UNITED STATES

Tel: 954-806-2378
Fax: 518-694-3311
sales@cmc-kuhnke.com
www.CMC-KUHNKE.com

CMC-KUHNKE, Inc. Midwest Office

900 Parkview Drive
Stoughton, WI 53589
UNITED STATES

Tel: 608-205-2612
Fax: 518-694-3311
sales@cmc-kuhnke.com
www.CMC-KUHNKE.com

CMC-KUHNKE, Inc. West Coast Office

16537 China Berry Ct.
Chino Hills, CA 91709
UNITED STATES

Tel: 714-833-8381
Fax: 518-694-3311
sales@cmc-kuhnke.com
www.CMC-KUHNKE.com

CMC-KUHNKE Asia Co., Ltd.

Rm 2205 22/F Causeway Bay Plaza 2
463-483 Lockhart Road
Causeway Bay, Hong Kong
CHINA

Tel: +86 20 39292287
Fax: +86 20 39292287
infochina@cmc-kuhnke.com
www.CMC-KUHNKE.cn